

ArcServeIT 6.6 for NetWare

How to restore files using ArcServeIT for NetWare

Disclaimer: Maple Tronics computers, Inc. has taken reasonable effort to ensure that the material contained in this document is correct and accurate, however, Maple Tronics Computers, Inc. gives no warranty and accepts no responsibility for the accuracy or completeness of the material.

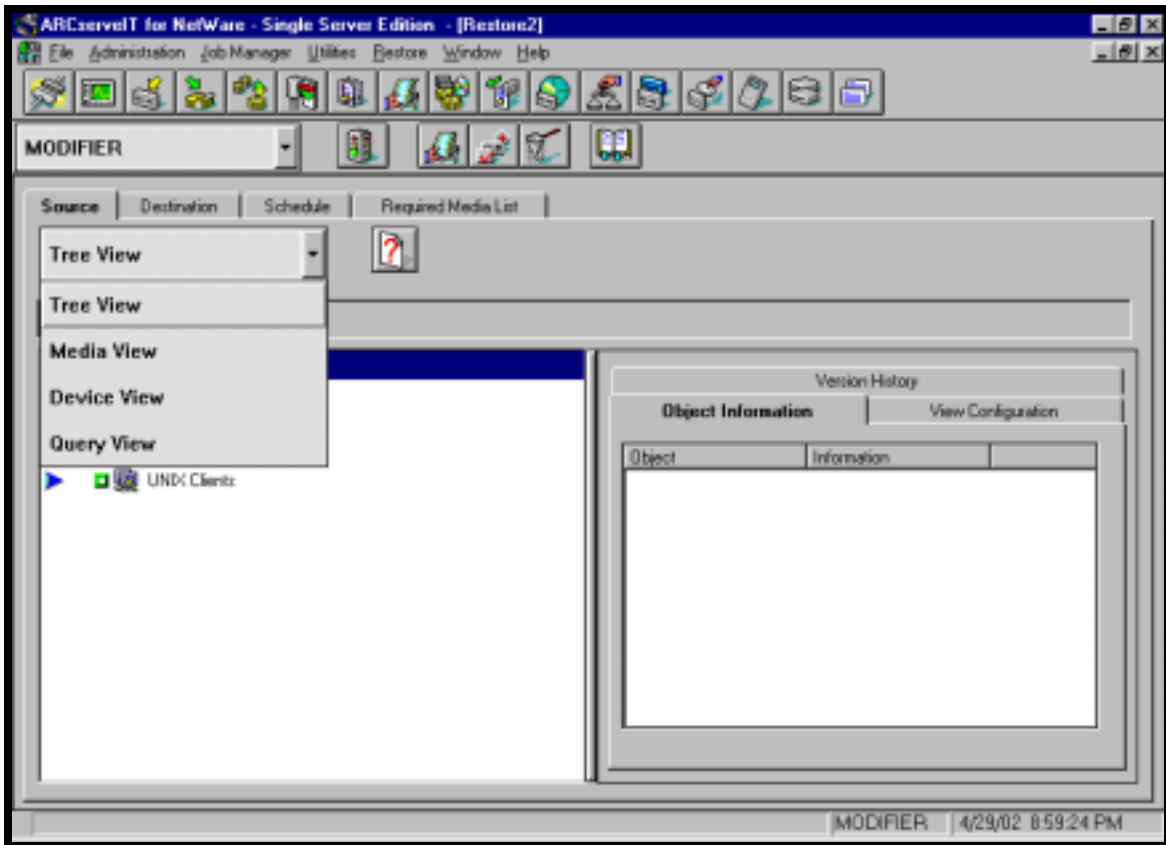
1. From a workstation, open the ArcServe Manager. This is located under
sys:\arcserve.6\manager\arcserve.exe
2. Write protect the tape that needs to be restored and insert it into the drive.
3. Select Device Management



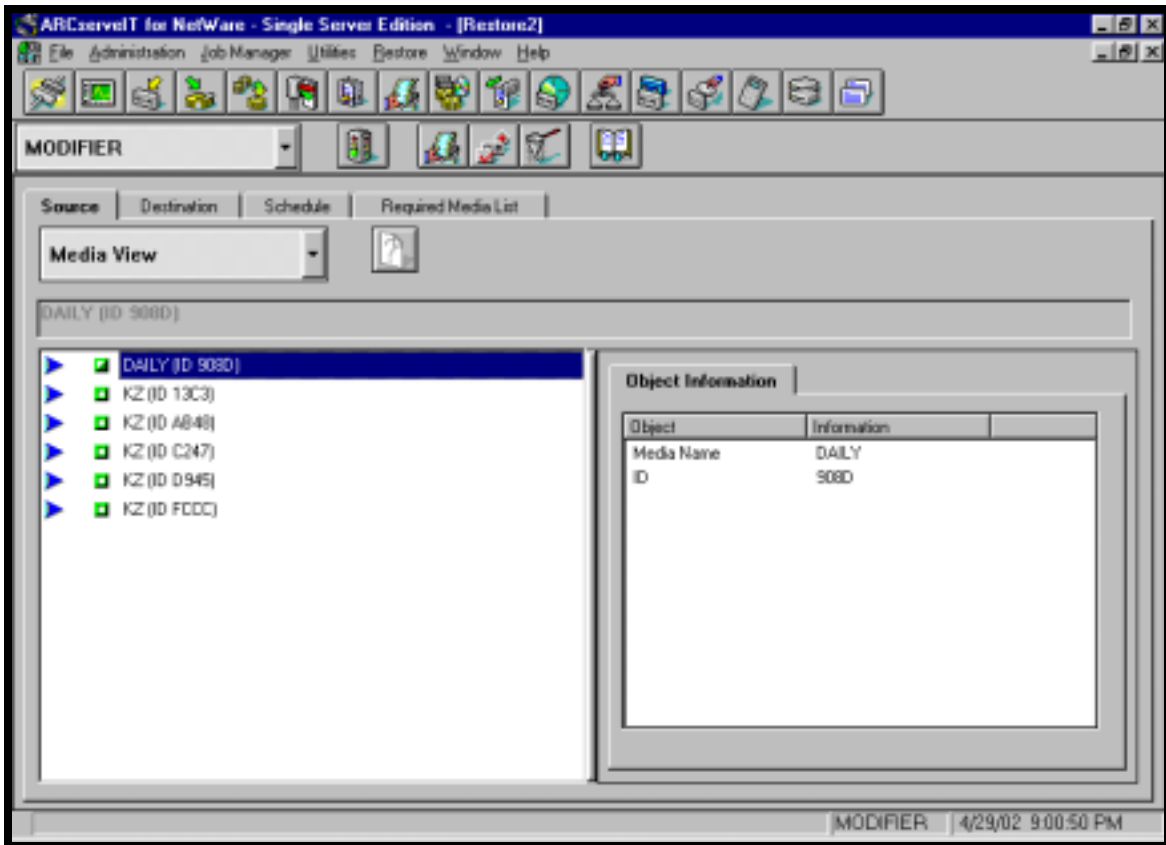
4. Select the tape drive and highlight the tape. Note the Media ID.



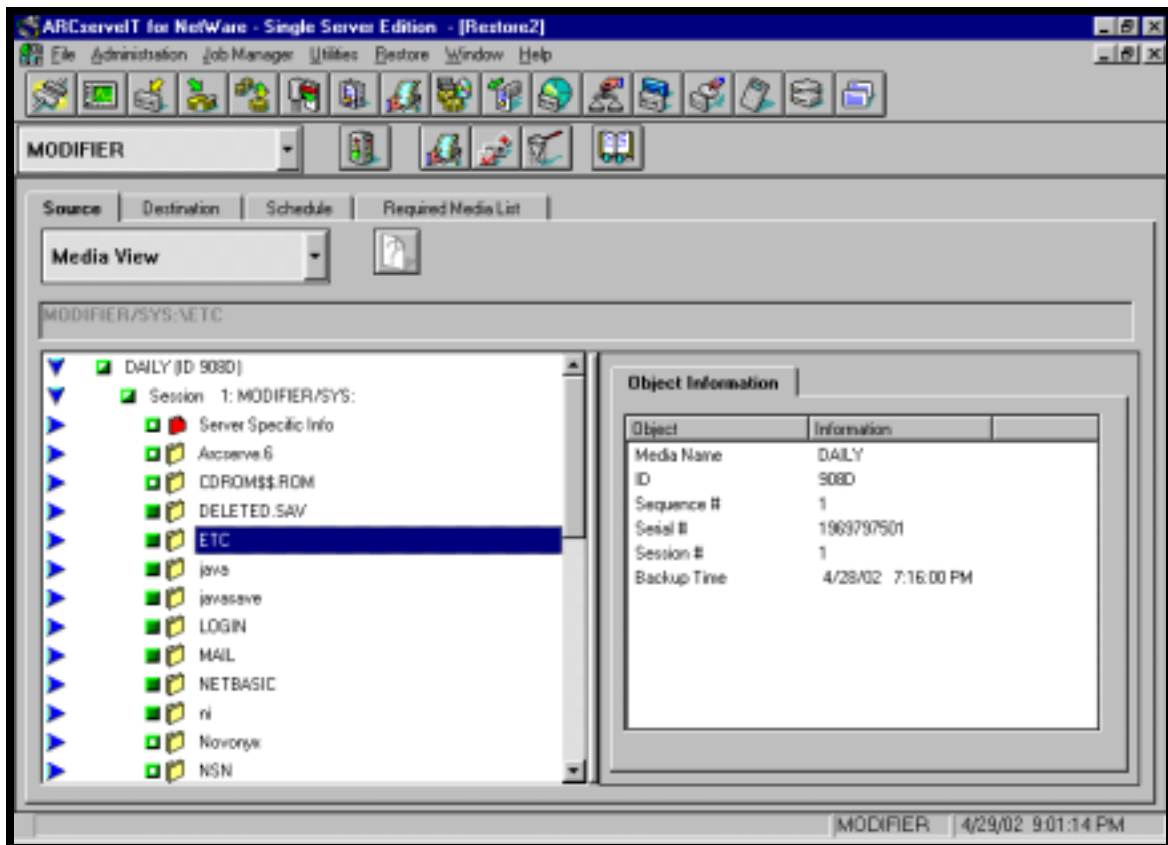
5. Exit Device Management, and select Restore from the main menu. On the Source tab change from Tree View to Media View.



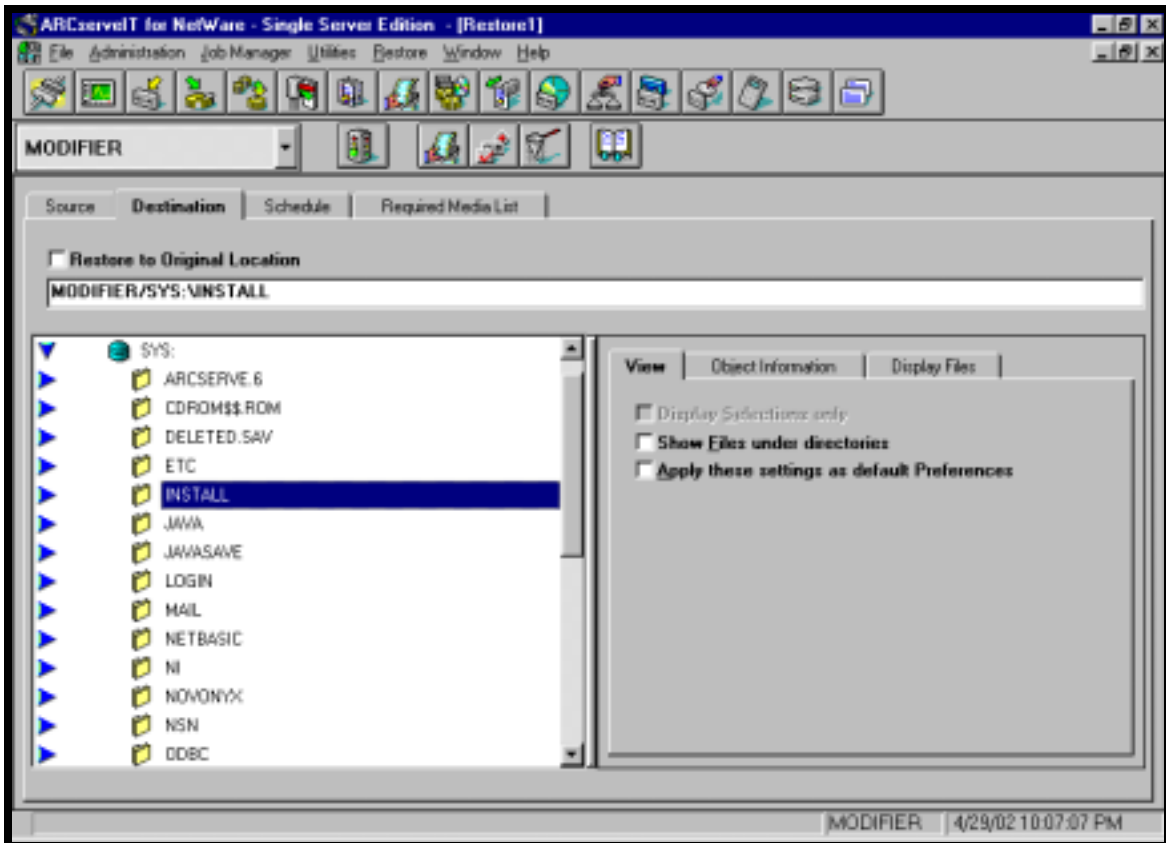
6. Under Media View find the tape with the same Media ID.



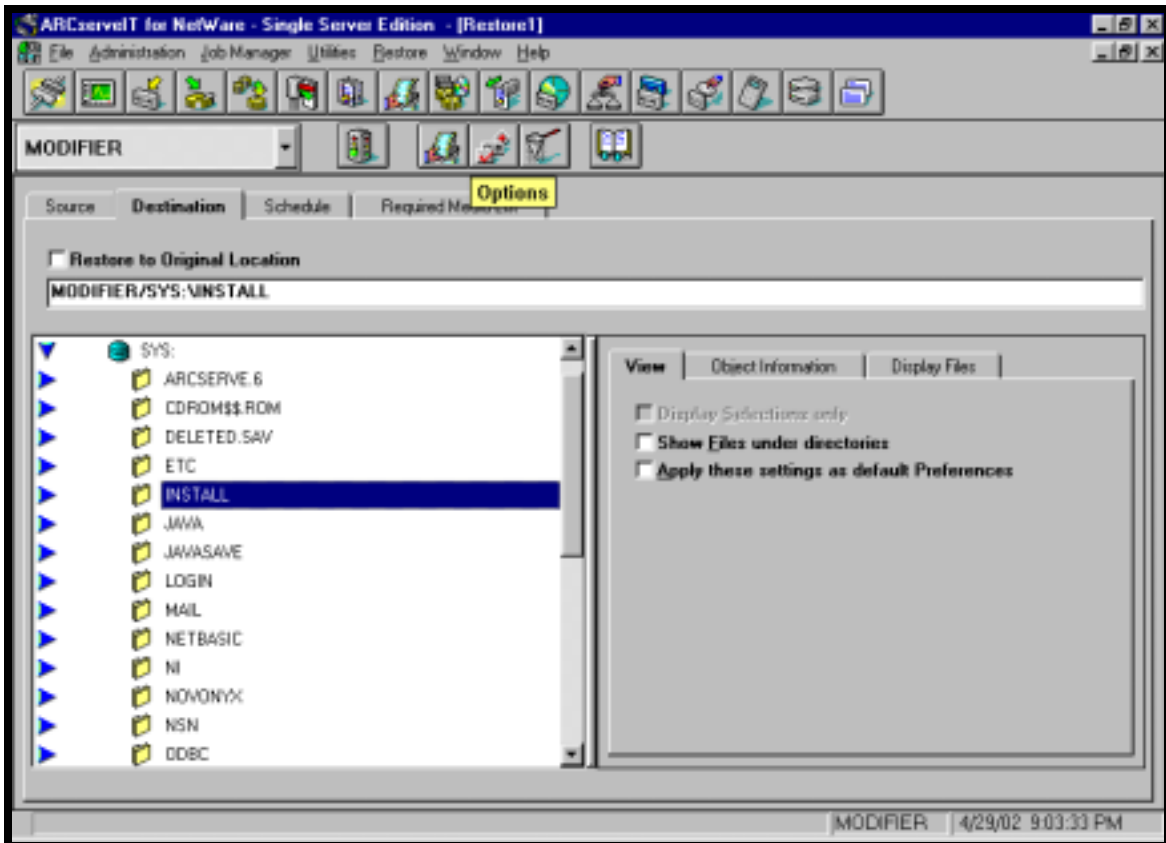
7. Select the files/directories that need to be restored.



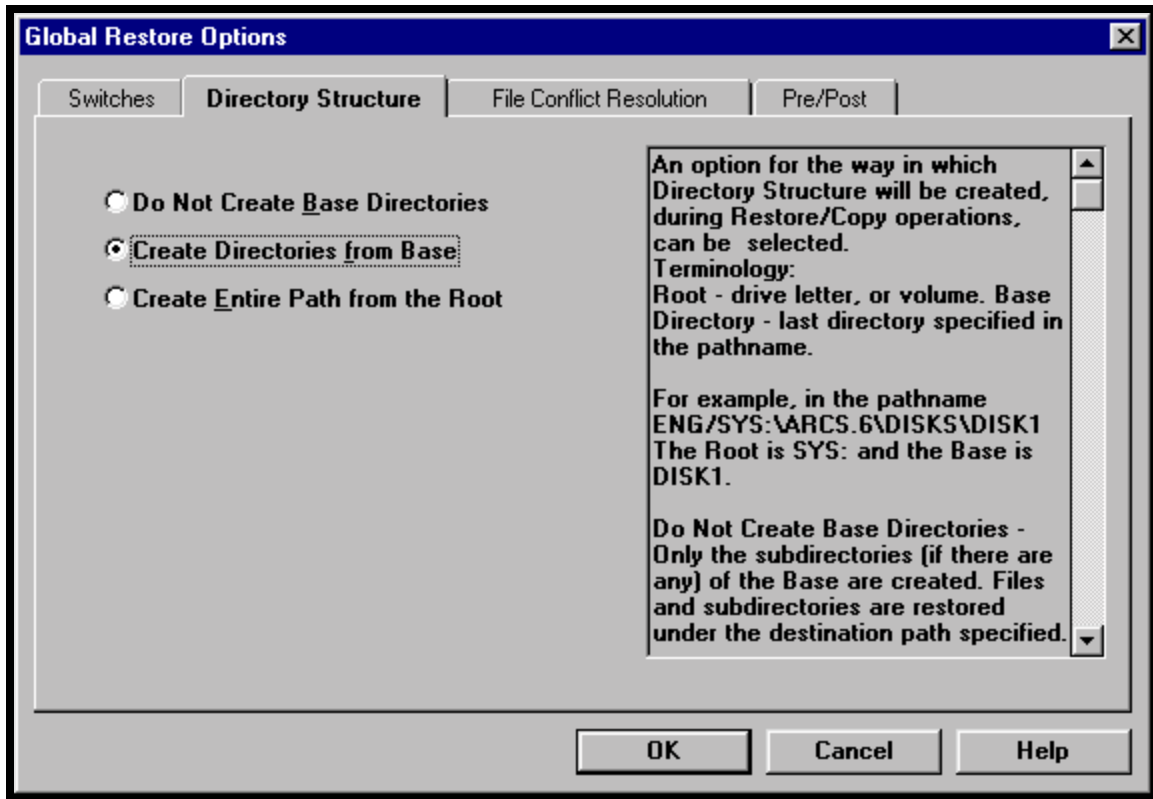
8. Select the Destination Tab and select the file destination. Generally we recommend restoring the files to an alternative location and then copying the files to the desired location.



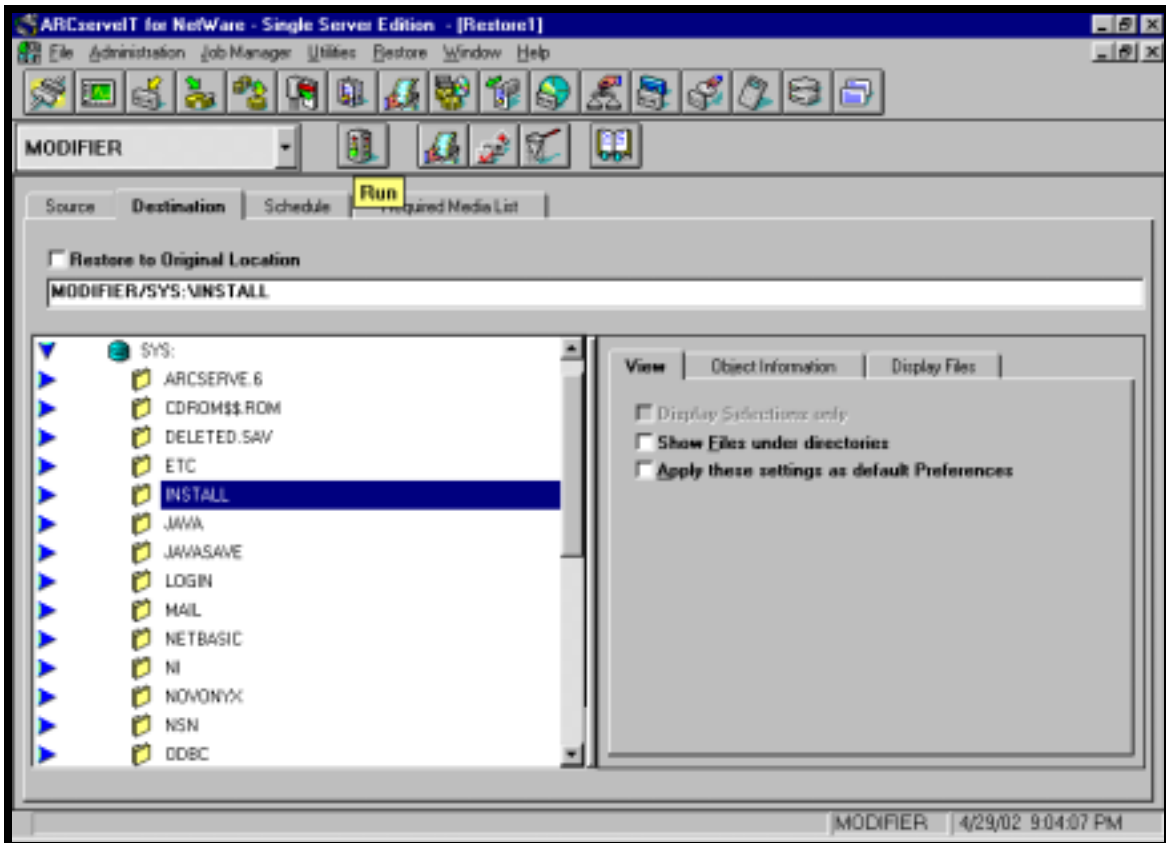
9. Select the Options Button (the one with the check mark)



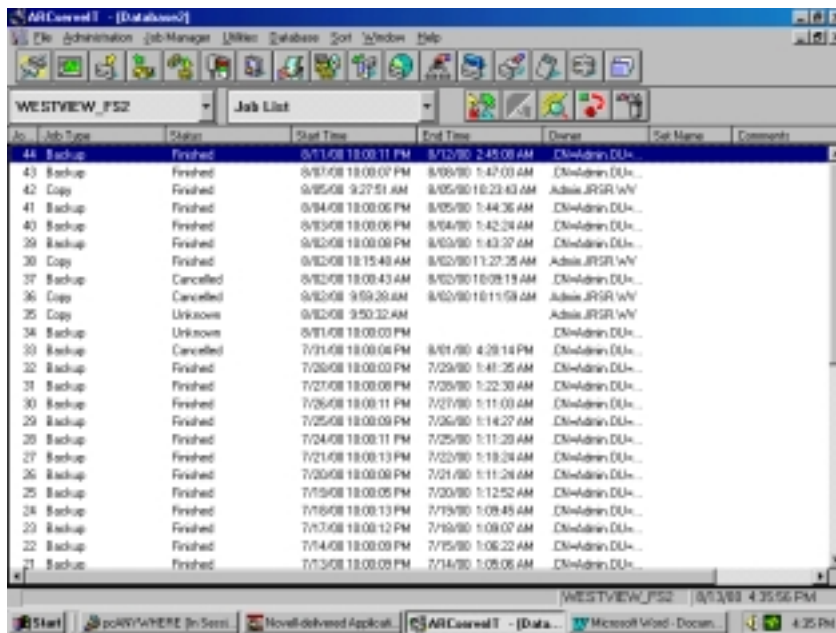
10. Select the directory Structure tab and select Create Directories from Base and click Ok.



11. Click on the Run Button (Traffic Light) and submit the restore operation to the job queue.



- Exit the restore wizard and click on Job Status and verify the restore operation is scheduled to run.



- After the restore is complete eject the tape from the drive and remove write protection from the tape.