

ArcServeIT 6.6 for NetWare

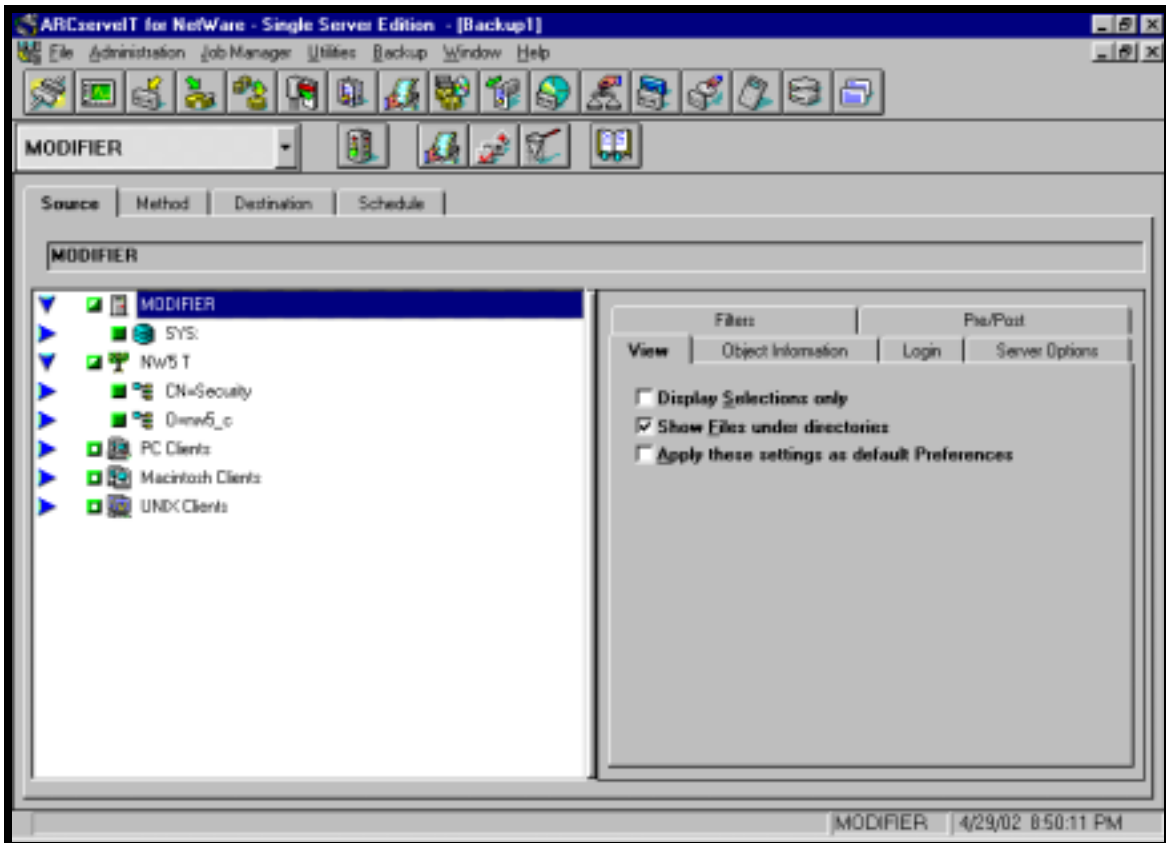
How to schedule a backup job in ArcServeIT 6.6 for NetWare

Disclaimer: Maple Tronics computers, Inc. has taken reasonable effort to ensure that the material contained in this document is correct and accurate, however, Maple Tronics Computers, Inc. gives no warranty and accepts no responsibility for the accuracy or completeness of the material

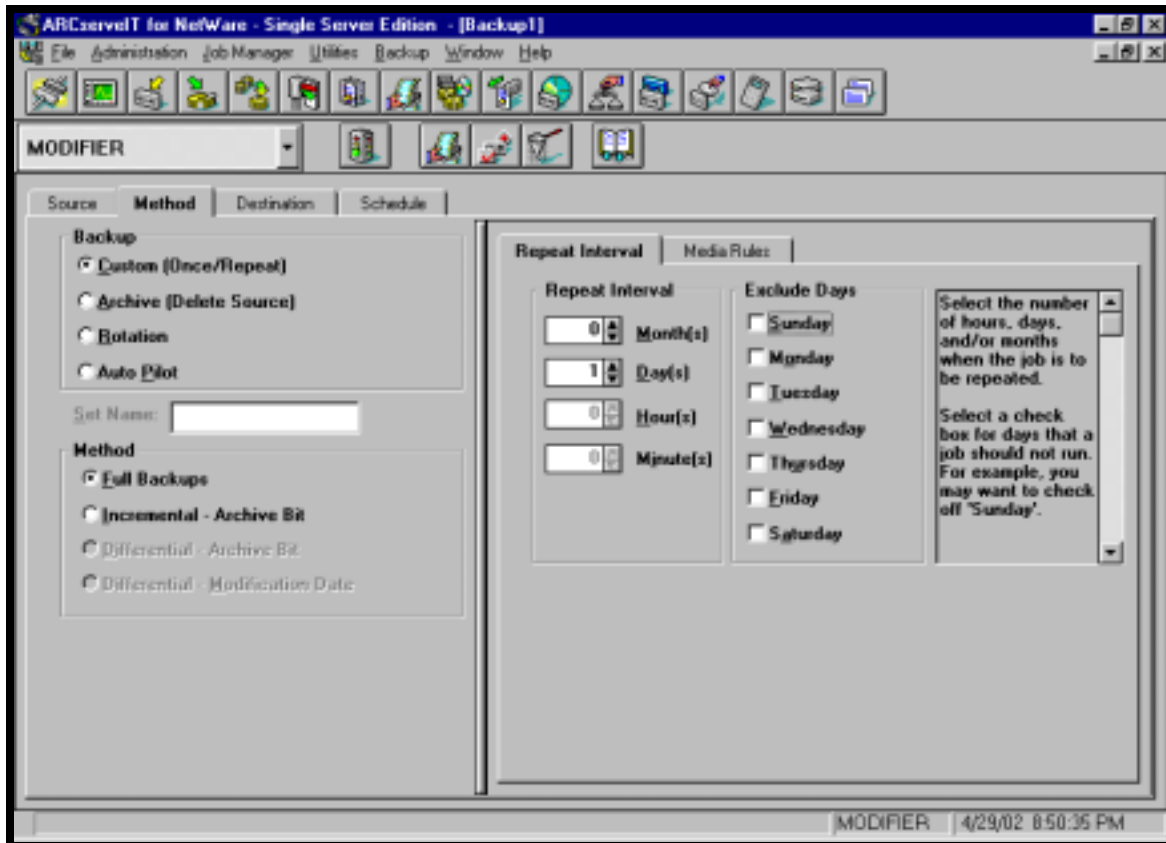
1. From a workstation, open the ArcServe Manager. This is located under
sys:\arcserve.6\manager\arcserve.exe
2. Select Backup.



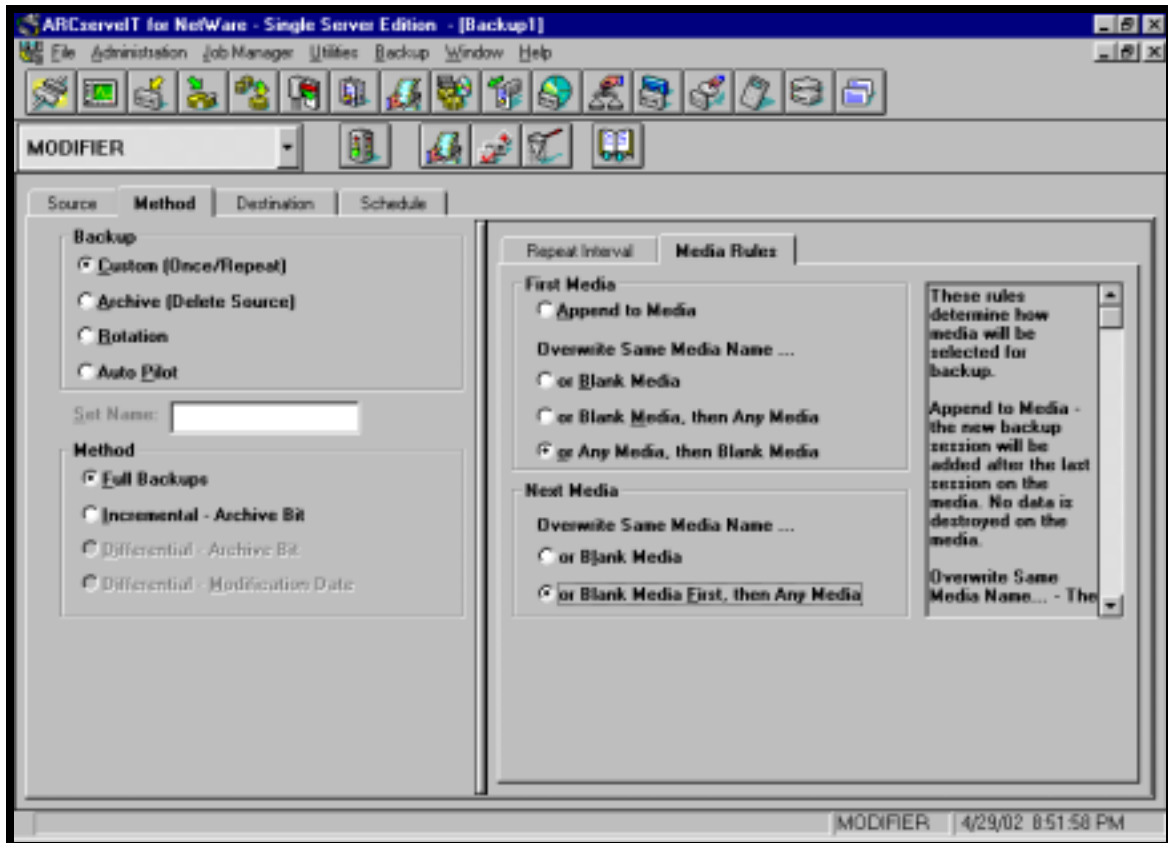
3. Select the Server(s) and volume(s) that need to be backed up.



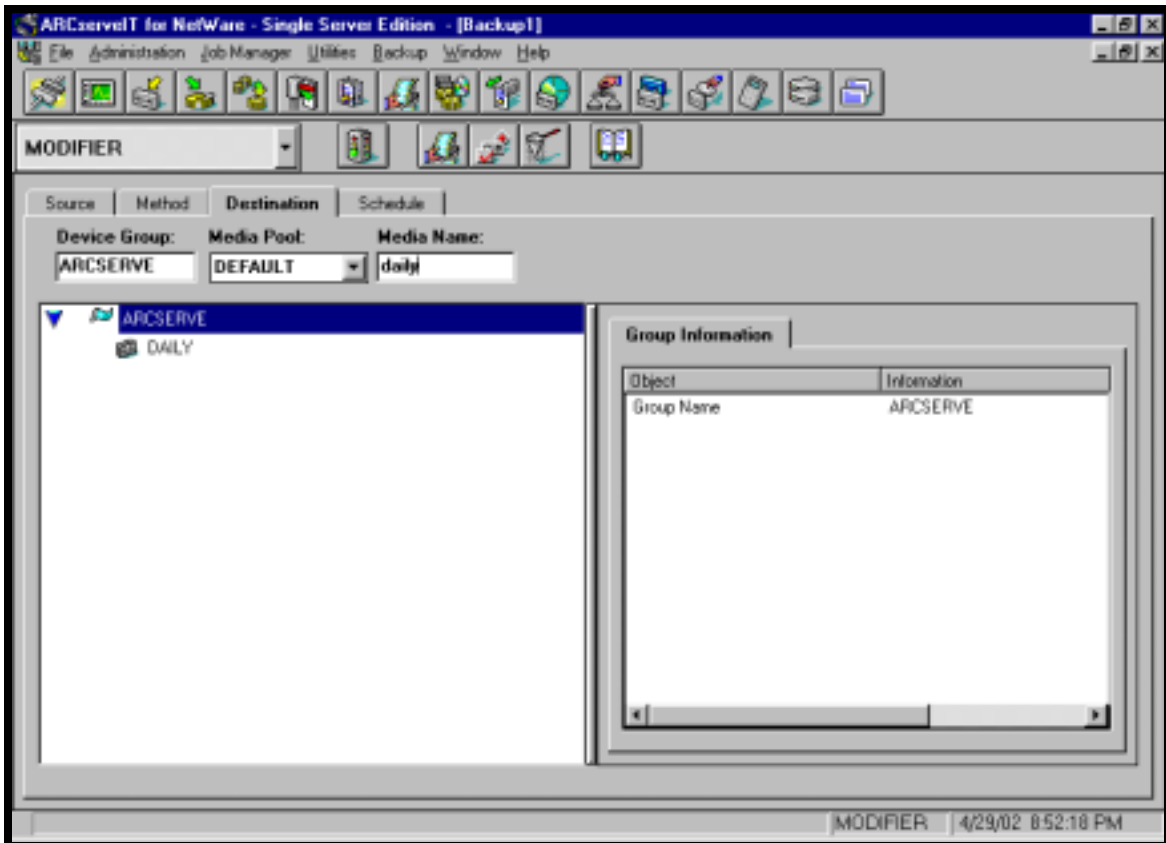
4. Select the Method tab and set the repeat interval to 1 Days



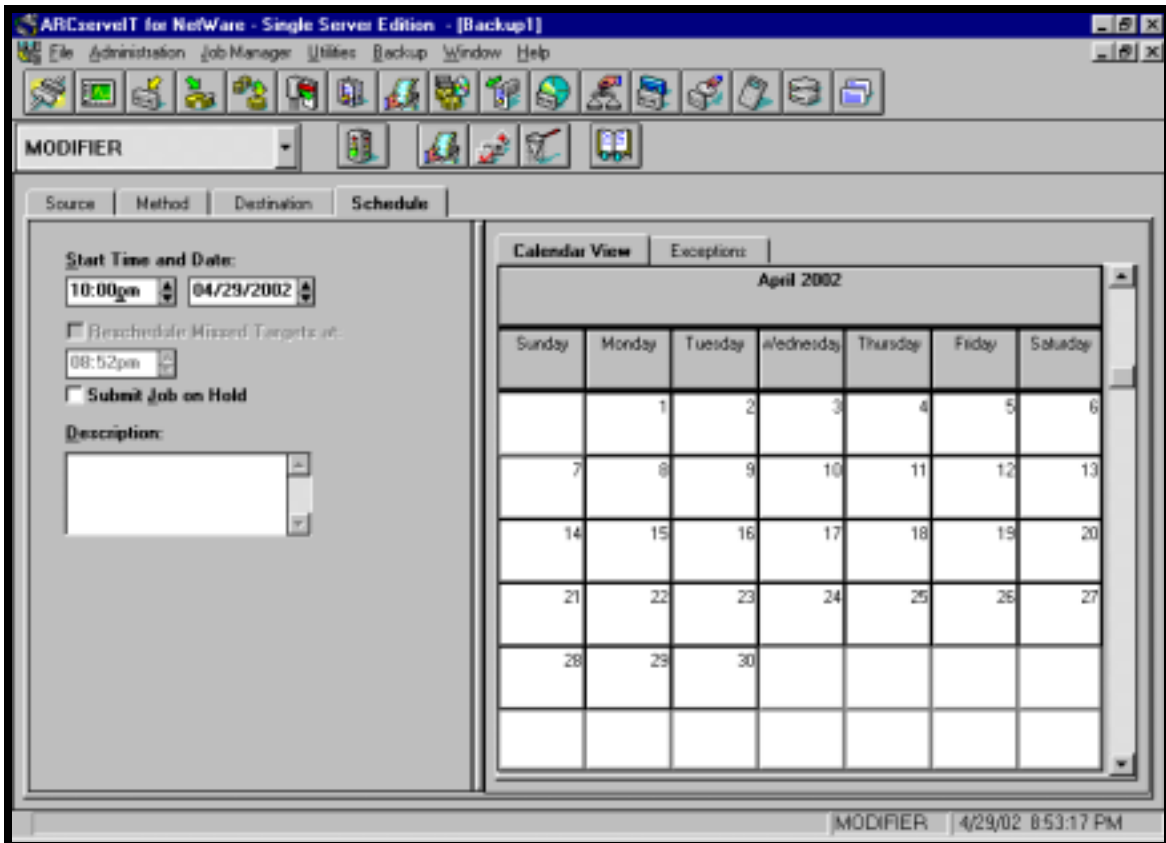
5. Select the Media Rules tab and set First Media to Overwrite Same Media Name or Any Media, then Blank Media. Set Next Media to Overwrite Same Media Name or Blank Media First, then Any Media.



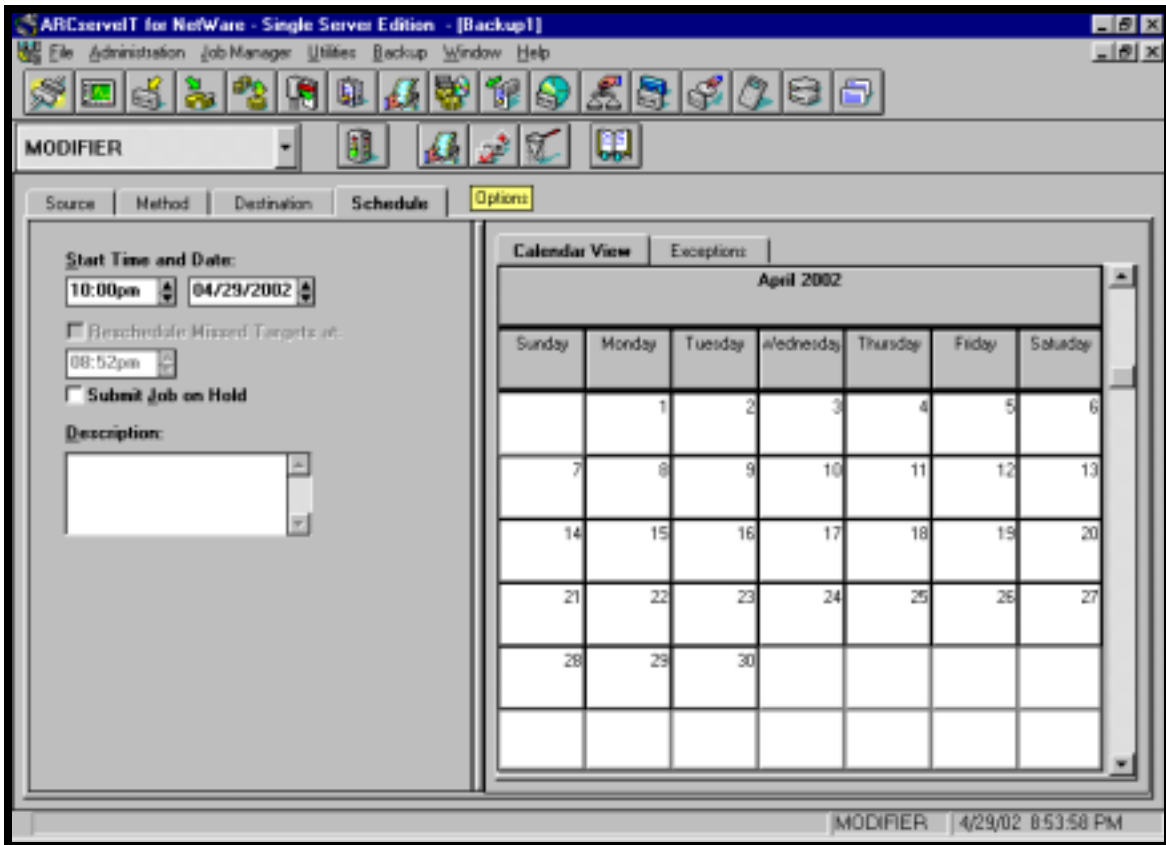
6. Select the Destination tab and select the backup group (Typically Arcserve) and specify the Media Name.



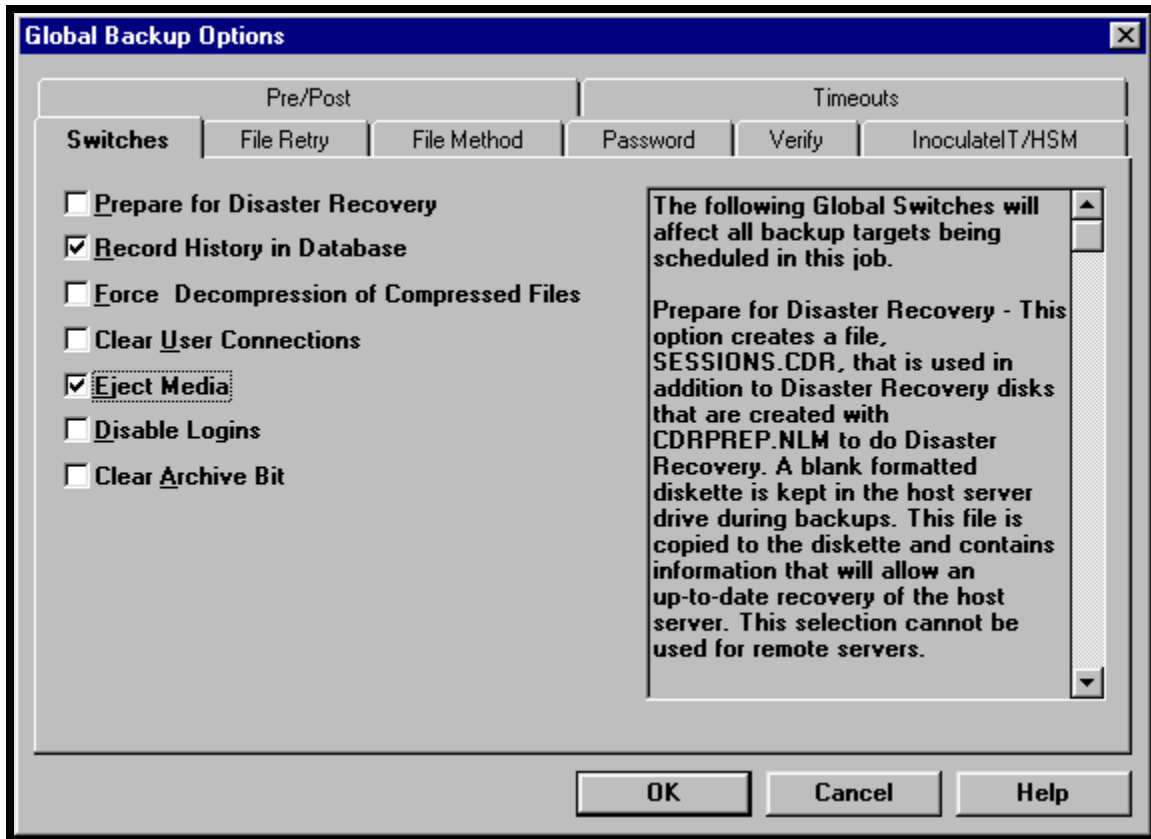
7. Select the Schedule tab and specify the start time and date.



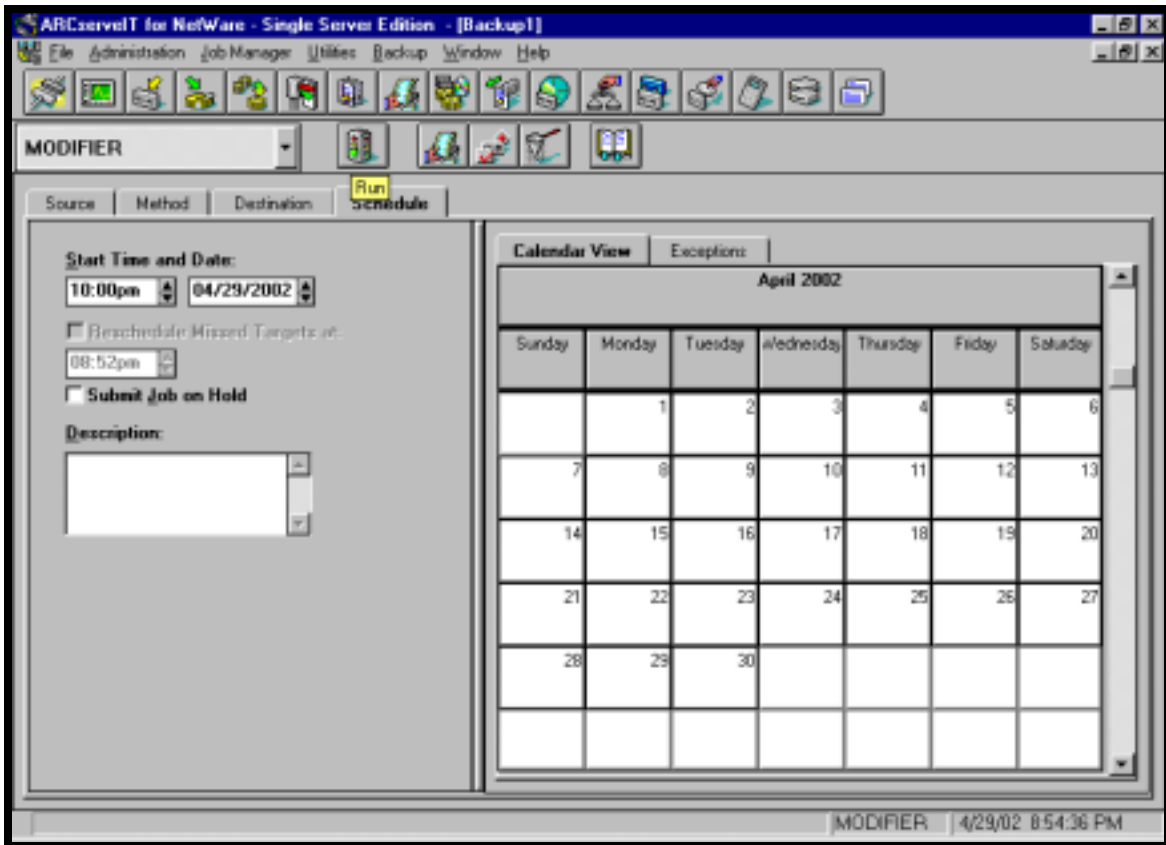
8. Select the Options button (the one with the check mark)



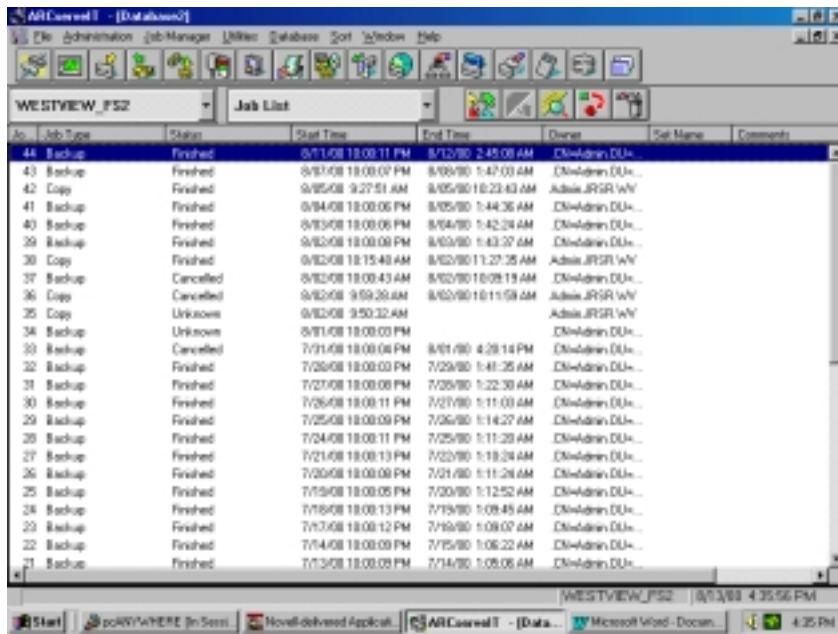
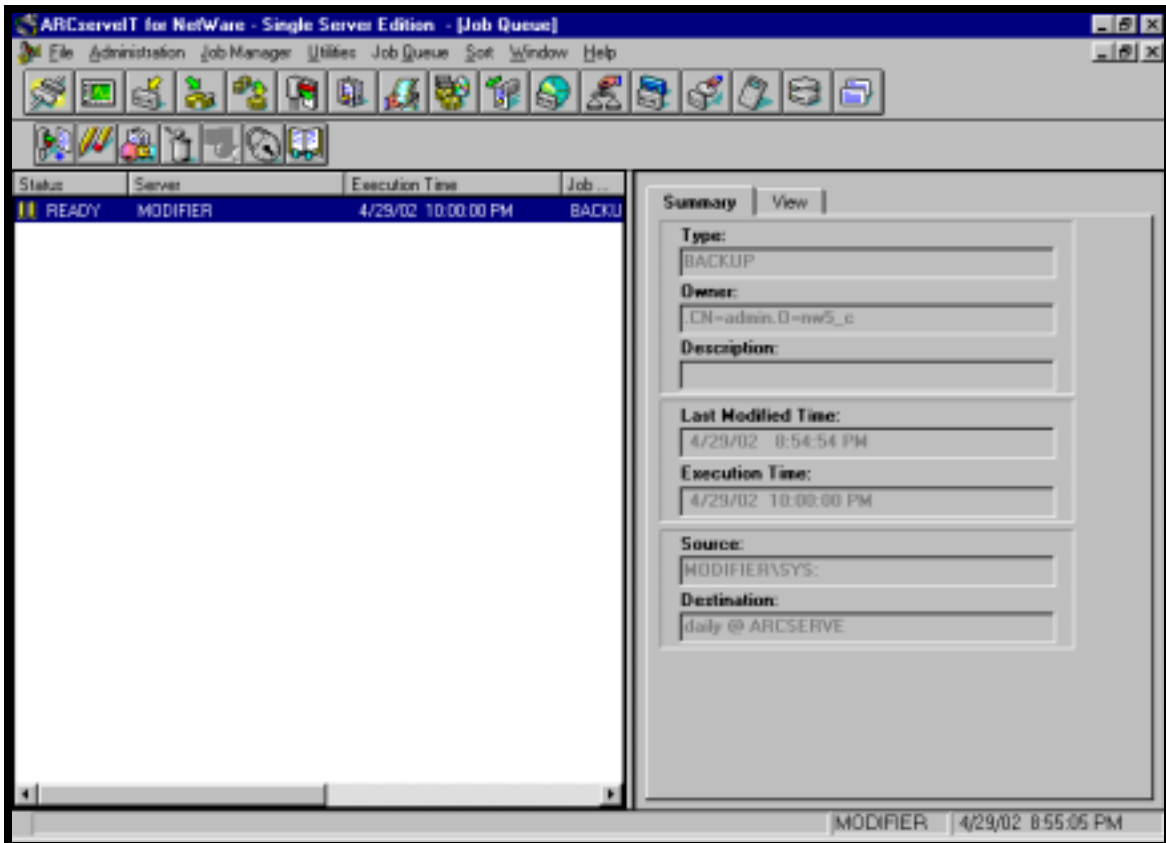
9. On the Switches tab select Eject Media.



10. Exit the Global Backup Options (Click OK). From the file menu select File | Save and save the backup job. Typically this is saved under sys:\archived\arcserve.
11. Click on the Run Button (Traffic Light) and submit the backup job to run.



12. Exit the backup wizard and select Job Status from the Main Menu.



13. Verify the backup job is scheduled and the status is Ready.