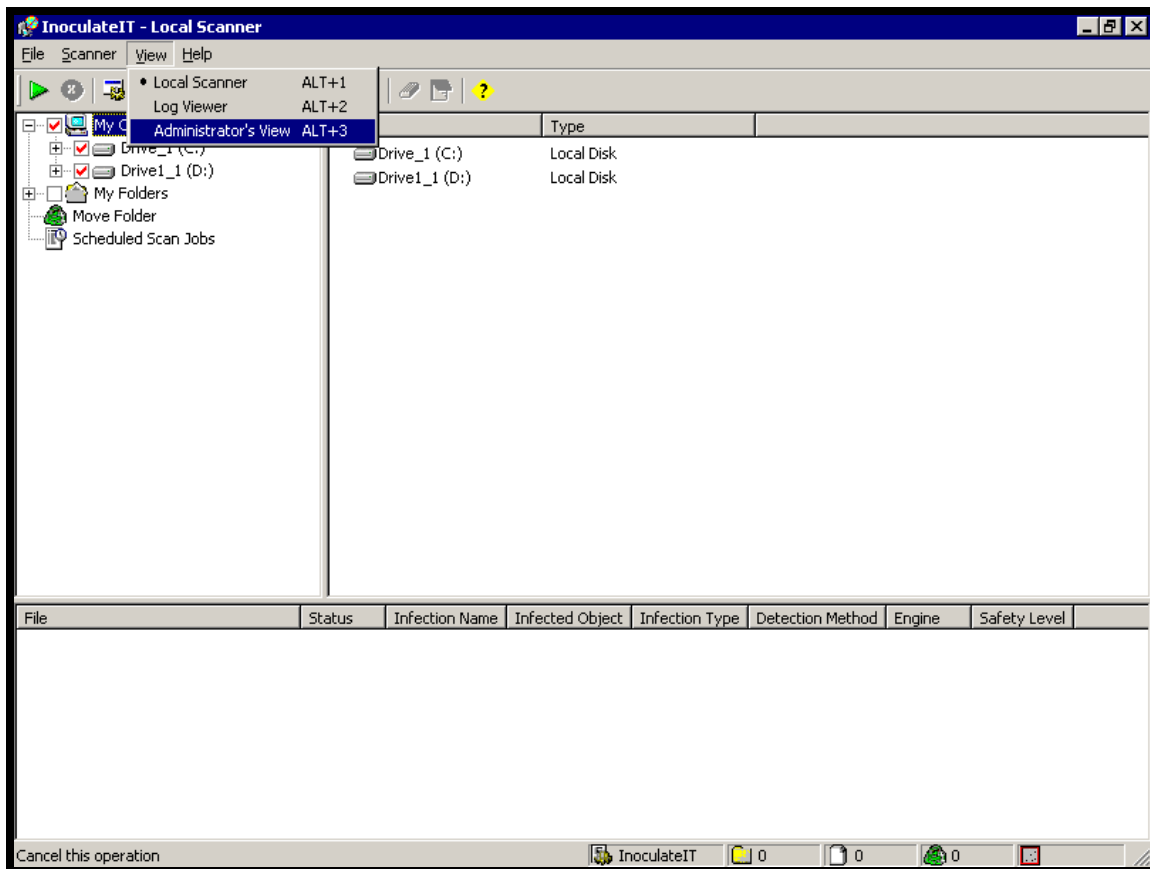


Etrust InoculateIT 6.0

How to verify InoculateIT 6.0 is updating virus definitions on workstations

Disclaimer: Maple Tronics computers, Inc. has taken reasonable effort to ensure that the material contained in this document is correct and accurate, however, Maple Tronics Computers, Inc. gives no warranty and accepts no responsibility for the accuracy or completeness of the material. Maple Tronics Computers, Inc. gives no warranty or guarantee that the use of the most current version of InoculateIT will protect workstations from receiving a virus, nor does Maple Tronics Computers, Inc. accept the responsibility if a virus should be acquired while using any version of InoculateIT.

1. Go to Computer Associates <http://support.ca.com/Download/virussig.html#inoc60> and note the virus signature version.
2. Launch etrust InoculateIT and click on View and select Administrator's View.



3. In Administrator's view click on the plus sign beside Configuration Settings and the plus sign beside Subnets. Highlight the subnet. Verify that the InoculateIT and Vet Signature version is the same on all the workstations as the version noted from Computer Associates web site.

InoculateIT - Administrator's View

File Administration View Help

MT1 (Administrator)

- Configuration Settings
 - Enforced Policies
 - Subnets
 - 172.016.000.001:4
 - 172.016.016.001:4
 - 172.016.160.001:4
 - Users
 - Legacy Domains
 - Organization

Summary

Name	Version	Build	OS Version	Sig Version	Sig Version	La
AKEITH	6.0	085	Windows 2000	InoculateIT 23.52.42	Ver 10.4.1944	17
ALIMBACH	6.0	085	Windows 2000	InoculateIT 23.52.42	Ver 10.4.1944	17
BPOULSON	6.0	085	Windows 98	InoculateIT 23.52.42	Ver 10.4.1944	17
BSPNOW	6.0	085	Windows 98	InoculateIT 23.52.42	Ver 10.4.1944	17
BSTAHL	6.0	085	Windows 2000	InoculateIT 23.52.42	Ver 10.4.1944	17
CDALHGREN	6.0	085	Windows 2000	InoculateIT 23.52.42	Ver 10.4.1944	17
CMILLER	6.0	085	Windows 2000	InoculateIT 23.52.42	Ver 10.4.1944	17
CTI	6.0	085	Windows NT 4.0	InoculateIT 23.52.42	Ver 10.4.1944	17
DERUBAKER	6.0	085	Windows 2000	InoculateIT 23.52.42	Ver 10.4.1944	17
DECHORN	6.0	085	Windows 2000	InoculateIT 23.52.42	Ver 10.4.1944	17
DGROVES	6.0	085	Windows 2000	InoculateIT 23.52.42	Ver 10.4.1944	17
DSTUTZMANLAPTOP	6.0	085	Windows 2000	InoculateIT 23.52.42	Ver 10.4.1944	17
EMANTEUFFEL	6.0	085	Windows 2000	InoculateIT 23.52.42	Ver 10.4.1944	17
FAVSERVER	6.0	085	Windows 2000	InoculateIT 23.52.42	Ver 10.4.1944	17
JBRAZEAU	6.0	085	Windows 2000	InoculateIT 23.52.42	Ver 10.4.1944	17
JHERSCHBERGER	6.0	085	Windows 98	InoculateIT 23.52.42	Ver 10.4.1944	17
JKRAMER	6.0	085	Windows 2000	InoculateIT 23.52.42	Ver 10.4.1944	17
JKROHN	6.0	085	Windows 2000	InoculateIT 23.52.42	Ver 10.4.1944	17
KBUCHER	6.0	085	Windows 2000	InoculateIT 23.52.42	Ver 10.4.1944	17
KEDWARDS	6.0	085	Windows 2000	InoculateIT 23.52.42	Ver 10.4.1944	17
KGRABER2	6.0	085	Windows 2000	InoculateIT 23.52.42	Ver 10.4.1944	17
KHOFFMAN	6.0	085	Windows 2000	InoculateIT 23.52.42	Ver 10.4.1944	17
KJABERG	6.0	085	Windows 2000	InoculateIT 23.52.42	Ver 10.4.1944	17
KSTAHL	6.0	085	Windows 2000	InoculateIT 23.52.42	Ver 10.4.1944	17
KSTUMP	6.0	085	Windows 2000	InoculateIT 23.52.42	Ver 10.4.1944	17
MAILROOM	6.0	085	Windows 98	InoculateIT 23.52.42	Ver 10.4.1944	17
MARTY	6.0	085	Windows 2000	InoculateIT 23.52.42	Ver 10.4.1944	17
MAYOR	6.0	085	Windows 2000	InoculateIT 23.52.42	Ver 10.4.1944	17

44 Machine(s)